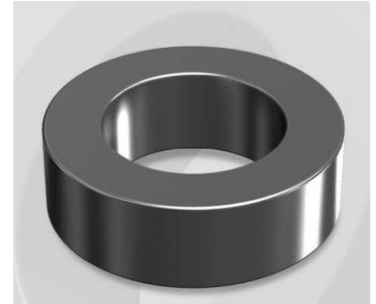


HP203026G

Electrical Characteristics

Material	Permeability (μ)	AL \pm 8% (nH/N ²)	DCB (% min) @ 200 Oe	Coreloss (mW/cm ³ , max) @ 50kHz, 1000G
HP	26	14	58.0	200

OD : 203



Core Dimensions

Dimensions		Uncoated		Coated		Color	Packaging
		(mm)	(inch)	(mm)	(inch)		
OD	(Max)	20.32	0.800	21.10	0.831	Black	Box Qty = 1,368 pcs
ID	(min)	12.70	0.500	12.07	0.475		
HT	(max)	6.35	0.250	7.11	0.280		

Physical Characteristics

Cross Section (A)	Path Length (l)	Window Area (Wa)	Volume (V)	Breakdown Voltage (Vac)
0.226 cm ²	5.09 cm	1.14 cm ²	1.1503 cm ³	1,000
0.035 in ²	2.004 in	224,985 cmil	0.0702 in ³	

Winding Information

0% Winding length/turn (cm)		
2.325		
40% winding factor Surface Area (cm ²)		
18.95		
40% Wound Di.(mm)		
OD	ID	HT
24.13	7.89	10.72

Typical DC Bias Performance

